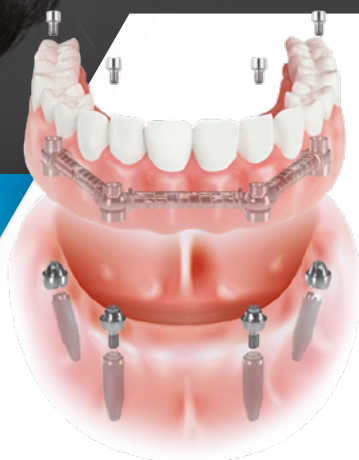




*Smile  
at life!*

## Immediate Implants with JUST ON 4® TECHNIQUE

INFORMATION FOR THE PATIENT



Your long-term and  
stronger  
prosthesis in a  
short time

**WINSIX®**  
PERFORMING IMPLANT SYSTEM

# WINSIX IMPLANTS

## Innovation and technology for your Oral Health

### Implantology is a tested and reliable technique

More than 40 years of scientific research and clinical application show that implant is the best solution when one or more teeth are missing.

Once the implant is placed inside the bone, it assumes the function of the root of the tooth and allows the patient an excellent mastication, it sustains the bone structure of the mouth avoiding atrophy and contributing to preserve a good face's aesthetic.

If until a few years ago we spoke about rejenction, today Scientific Research, new materials and rehabilitative techniques make the intervantion reliable. For you and your smile comfort contact professional who periodically update with specific courses and use safe and certificated products.



# THE DIFFERENCE BETWEEN A TRADITIONAL MOVEABLE PROSTHESIS AND IMPLANT PROSTHETICS.

At a certain age it is fundamental to have stable teeth for oral and general health, and also to have a younger countenance.

The classic removable DENTURE can cause several issues, such as the feeling of a foreign body in the mouth and no stability - the denture moves - because, over the years, the subjacent bone will be compressed and will lose its thickness.

On the contrary, IMPLANT prosthetics gives the feeling of true teeth, together with the joy of chew and taste foods and an authentic and stable smile.

Your Dentist will tell you the best solution, suitable for your mouth.



TRADITIONAL MOVEABLE

STABLE ON IMPLANTS



# STUDIES AND SCIENTIFIC RESEARCH TO GIVE YOU BACK STABLE AND PERMANENT TEETH

A 13-years study at San Raffaele of Milan.

WINSIX Implants are the result of a serious and meticulous Scientific Research, begun in 1995 in collaboration with reference and reliable Scientific Partners.

The department of dentistry of San Raffaele Hospital of Milan is one of the most prestigious, cutting edge scientific pole, developing new rehabilitations on implants techniques.

In this site a research protocol has been developed, which enabled the study of specific techniques for those who have lost all the teeth in upper and lower arches, and can have back stable teeth in few hours, with a modest cost.

## A 13-YEARS RETROSPECTIVE ANALYSIS OF THE RESULTS OF IMPLANT-PROSTHETICS TREATMENTS WITH WINSIX SYSTEM.

DECEMBER 2005 DECEMBER 2018.



2254 PATIENTS



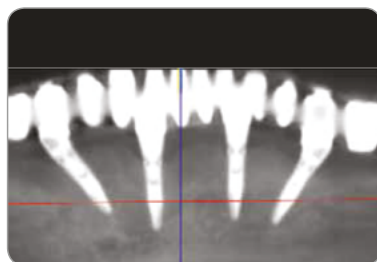
5116 PLACED IMPLANTS

You can read the Study published on the website

<http://www.biosafin.com/bibliografia>



take a picture and read the article



# IF ALL THE TEETH ARE MISSING.



## 4 Implants are enough with Just on 4 technique.

JUST ON 4® Technique was developed with the objective of give the possibility to those patients who lost all the teeth of one arch to have a complete, fixed and stable denture, with a little invasive and painful intervention, at a low-cost.

With this technique 4 implants are enough to replace all the teeth, in some cases 6 implants are needed for the upper arch.

Implant placing can be performed in one single appointment so the patient can leave the dental practice with his fixed prosthesis, together with the resulting aesthetic and functional advantages.

In many cases it is possible to re-adapt the already existing prosthesis, reducing costs.

## LESS TIME, LESS SPENDING!



4 IMPLANTS,  
PLACED IN A  
JAW WITH NO  
TEETH

THE PROSTHESIS  
IS IMMEDIATELY  
PLACED



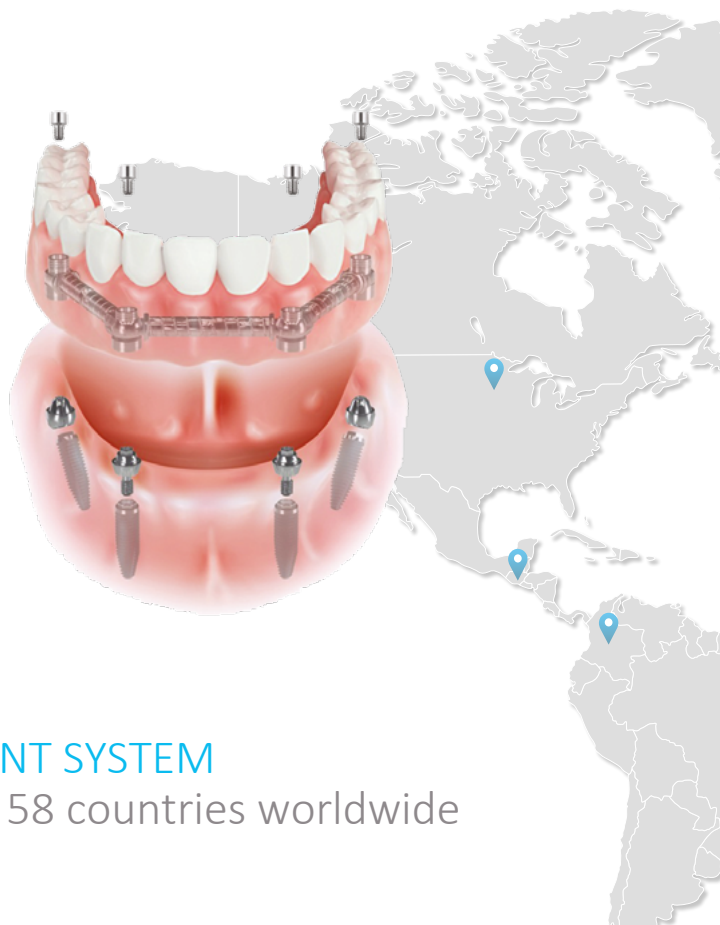
# AN INTERNATIONAL AND SINGLE PATENT

**In order to attach permanently your prosthesis to implants: CAB device**

Once implant are placed, replacing the natural roots of the teeth, prosthesis can be fixed permanently (without remove it) on a bar which connects all the implants.

To make this solution fast and efficient, WINSIX developed CAB Device - Clip Abutment Bar - to perform all the rehabilitation in a limited period of time, also in one single appointment.

The prosthesis is immediately strong and robust over time.



**WINSIX<sup>®</sup> IMPLANT SYSTEM**

is registered in 58 countries worldwide

# RECOGNISED ALSO FROM US COMPETENT DEPARTMENTS

## Originality and innovation

CAB® Device is the result of Research, Technological development and clinical application, reported by Dentistry department of San Raffaele Hospital of Milan, during multiannual study.

This solution allows to switch from a toothless mouth to fixed and stable teeth in few hours, without going to the dentist several times.

During the intervention it is possible to place few implants (from 4 to 6) and put the already prepared prosthesis or - if possible - the already existing prosthesis, re-adapting it.

We speak about immediate load implants with JUST ON 4 Technique.



International and European patent  
PCT/EP2011/072448  
EP Patent n. 11425032.7



CAB® Patent awarded by the competent american departement, it certifies originality and innovative technological contents.



# FIXED AND STABLE BRIDGES ON IMPLANTS:

if only few teeth are missing

Until recently, if few adjacent teeth were missing, the solution was the application of a bridge that, in order to be attached, needed the healthy adjacent teeth facing, with the risk of compromise them. With chewing and time, these one will be damaged and the space between the teeth will increase.

Dental implants are an ideal alternative to the bridge, because the original situation of the mouth is restored, and this is long-lasting solution.

Implants can be placed long after teeth fall out, or immediately after their extraction, according to mouth tissues conditions.

If we speak about immediate load, after having placed the implant and the tooth (the crown) and it is possible to chew.



1. Solution on implants at the end of the upper arch.
2. Solution on implants in the jaw bone, in front aesthetic zone.



# BY PEOPLE FOR PEOPLE

Our commitment for your oral health and general wellness.

in the last 40 years, milion of implants have been placed on patients of different race and age, each of them with specific needs and anatomical conditions.

WINSIX® is an Implant System developed by people for people. It is the result of competence and commitment of engineers, biologists, and specialists with a great knowledge of the sector, with a clear vision of Dentists and Patients' needs.

For this reason WINSIX® Implant System is even more appreciated and constantly grows.



There is the best  
solution for you!

# SCIENTIFIC RESEARCH PRODUCTION QUALITY

## International Certifications

WINSIX® Implants are developed and produced according to a serious and responsible research, with the objective of improve oral and general health of the patient.

New rehabilitations techniques can meet different patient's need, giving him back smile, even in more complex cases, and in a short amount of time, reducing costs.

Production quality with the monitoring of each implant according to a strict company management system - which ensures that every production step - from titanium extraction to certificated production sites - up to product sterilization, follow quality standards.

100 µm

Zone Mag = 48 X

WINSIX PRODUCT CERTIFICATIONS



CONTINUING  
SCIENTIFIC  
RESEARCH  
for better results  
Years 1995 – 2018

The collection of more than 300 publications of WINSIX Scientific Research.

# THE CARE OF A PROSTHESIS ON IMPLANTS

## Implant Card

Prosthetics on implants become natural teeth, so they have to be brushed and flossed.

Smoking and coffee can stain prosthetics and teeth.

Biosaf In provides the Dentist the Implant Card for the Patient, and it is useful to check clinical situation of the prosthesis when the patient is far from home. It is the "register" of the material inside your mouth.

Implant Card for the patient  
provided by BIOSAFIN for the  
dentist



all the informations you want are at  
[www.implantologiawinsix.com](http://www.implantologiawinsix.com)

Smile at life!



## CREDITS

BIOSAFIN thanks Dentists, legal-medical professionals and everyone who collaborated to make this brochure

WINSIX® Implant System is produced and delivered by BIOSAFIN, specialized in Implantology and Oral Surgery. BIOSAFIN works pursuing objectives of scientificity and reliability, professional ethic and seriousness and business reliability. BIOSAFIN is manufacturer and distributor of BIALIGNER dental aligner, rapid and mimetic.

**BIALIGNER**  
L'ALLINEATORE DENTALE

COD. Ediz. 9505/ITAVI - 2019

This Brochure is provided by

**BIOSAFIN**

**GLOBAL QUALITY**

BIOSAFIN is a registered company:

**UNI EN ISO 9001:2015** which certifies the entire work process, confirming its conformity with the optimal quality requirements in order to safeguard product users – specialists and patients.

**UNI CEI EN ISO 13485: 2016** which certifies Medical Device Quality.

Quality parameters imposed by certifications are periodically examined and re-evaluated.

[biosafin.com](http://biosafin.com)

**WINSIX**  
PERFORMING IMPLANT SYSTEM 

WINSIX Product Certifications

CE

FDA